



www.wincodetek.com

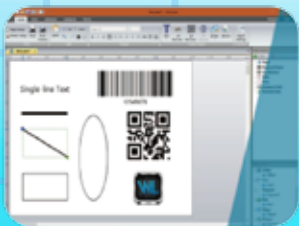
# Thermal Transfer Desktop Label Printer LP4 Series

*Your winning code*

600 dpi  
High Print  
Quality



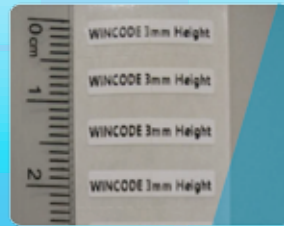
Software supports various of database connection



Free bundled labelling software with friendly interface



Cover closing safety design



3mm label height support



Micro print at 600 dpi resolution

+886-2-2917-1759

www.wincodetek.com

Wincode Technology

Sales@wincodetek.com



# Standalone Label Printer



|                               |  |
|-------------------------------|--|
| <b>MODEL</b>                  | <b>LP433E</b>  |
| Printing method               | Thermal Transfer / Direct Thermal  |
| Resolution                    | 600 DPI  |
| Max. print speed              | 76 mm (3") / second  |
| Max. print width              | 101.6mm (4")   |
| Max. print length             | 508mm (20")  |
| Enclosure                     | Double walled plastic  |
| Physical dimension            | 220mm(W) x 198mm(H) x 288mm(D)<br>8.7"(W) x 7.8"(H) x 11.3"(D)   |
| Weight                        | 2.5 KG   |
| Label roll capacity           | 127 mm (5")OD  |
| Ribbon                        | 300M length, max. OD 67 mm, 1" core  |
| Ribbon width                  | 25.4 mm ~ 110 mm (1" ~ 4.3")   |
| Processor                     | 32-bit RISC CPU  |
| Memory                        | 8MB Flash memory, 16MB SDRAM<br>SD slot for expansion up to 32GB   |
| Power                         | External universal switching power supply<br>Input: AC 100-240V, 2.0A, 50-60Hz; Output: DC 24V, 2.5A, 60W  |
| Operation switch, Button, LED | 4 buttons, 2 LEDs<br>1 LCD(2.13",Resolution:128x64),1 Buzzer   |
| Interface                     | USB 2.0, RS-232, USB Host, Parallel, Ethernet 10/100 Mbps<br>Bluetooth(option), Wireless 802.11 b/g/n (option)   |
| Sensors                       | Reflective sensor (adjustable), Ribbon end sensor<br>Cover open sensor, Paper near-end sensor (option)   |
| Internal fonts                | Seven kinds of bitmap fonts  |
| Bar code                      | 1D bar code : Code 11, Code 39, Code 93, Code 128, Codabar, EAN/JAN-8, EAN/JAN-13, Interleaved 2-of-5, ITF-14, MSI Plessey, PostCode, Telepen, UPC-A, UPC-E, UCC-128, Standard 2 of 5, Industrial 2 of 5<br>2D bar code: Code 16K, Code 49, Aztec Code, QR Code, PDF417, Micro PDF417, Data Matrix, Grid Matrix, Micro QR Code, MaxiCode |
| Printer language              | WPL (ZPL, EPL, TSPL, DPL Auto Switch)  |
| Dealer options                | Cutter · Peeler dispenser · External label stand   |
| Media width                   | 15 ~ 110 mm (0.59" ~ 4.3")   |
| Media thickness               | 0.06 ~ 0.19 mm (2.36 ~ 7.48 mil)   |
| Media core diameter           | 25.4 mm (1")   |
| Label length                  | 3 ~ 508 mm (0.12" ~ 20")   |
| Real time clock               | RTC (battery is included)  |
| Storage condition             | -40 ~ 60°C, 10~ 90% (non-condensing)   |
| Operation condition           | 5 ~ 40°C, 25 ~ 85% (non-condensing)  |
| Safety regulation             | CE Class B, FCC Class B, CCC, CB, BIS  |
| Bundled software              | "WinLabel" label design software with database function, Windows driver, Printer utility   |
| Platform support              | Windows XP SP3, Vista, 7, 8, 8.1, 10 and Server 2003, 2008, 2012, 2012R2(32/64 bit)<br>SDK: Android, ActiveX, Windows(C++/C#/VB)   |



Parallel USB Host USB Ethernet RS232



Peeler Module

Cutter Module

Copyright © Wincode Technology Co, Ltd. All rights reserved. Features and specifications are subject to change without prior notice.

Made in Taiwan



WINCODE TECHNOLOGY CO., LTD  
Tel: +886-2-29171759  
E-mail: sales@wincodetek.com



www.wincodetek.com